

N^o 75
#148

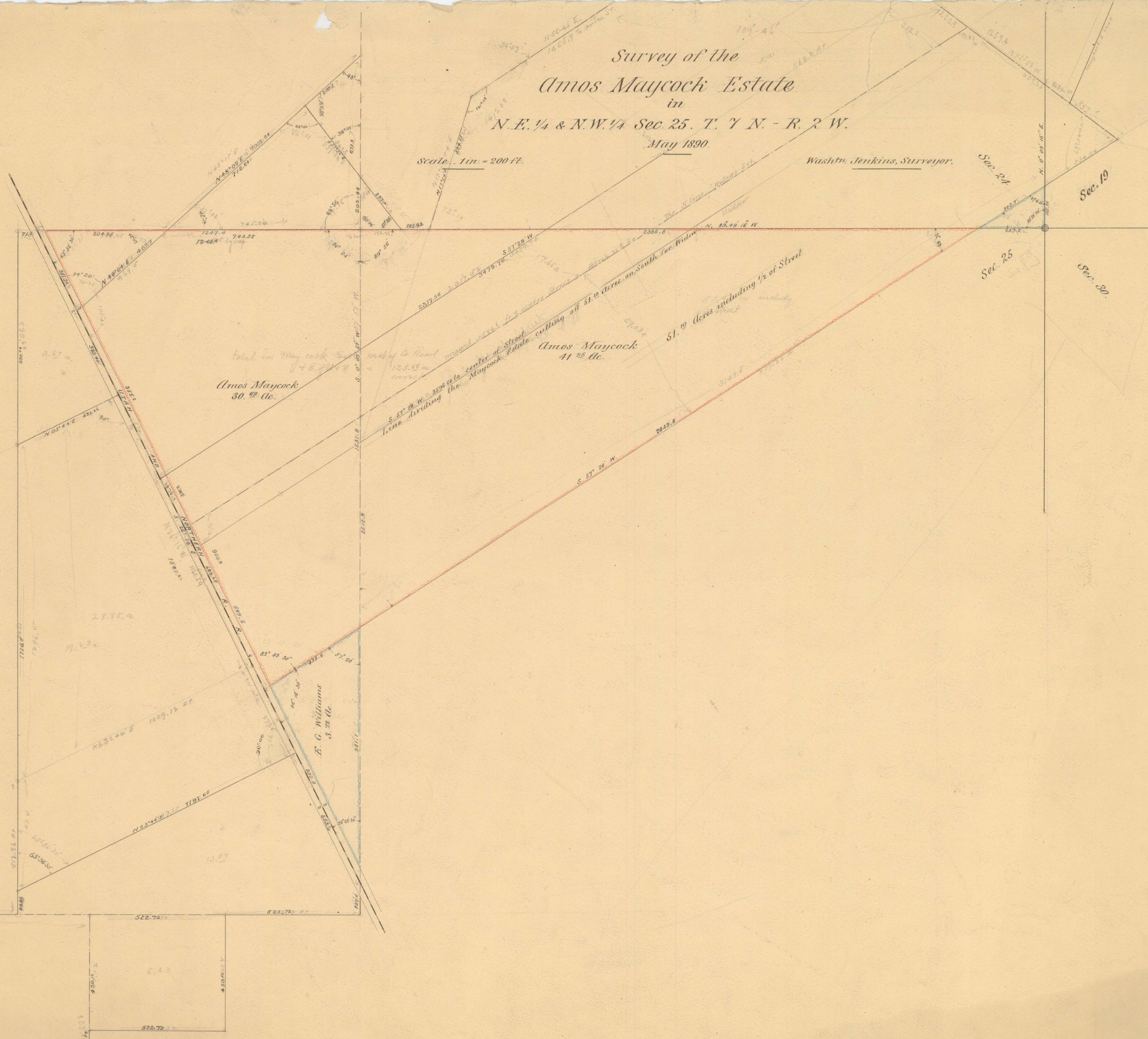
Survey of the Amos Maycock Estate

in
N.E. 1/4 & N.W. 1/4 Sec. 25. T. 7 N. - R. 2 W.

May 1890

Washn. Jenkins, Surveyor.

Scale 1 in. = 200 ft.



Amos Maycock
30.00 ac.

Amos Maycock
41.00 ac.

E. C. Williams
3.22 ac.

Sec. 19

Sec. 24

Sec. 25

Sec. 30

75